





RoughSawn Cedar Single EZ™ - Denim Blue

Exteria Building Products
1111 NW 165th Street
Miami, Florida 33169-5819

Phone: 877.EXTERIA (398.3742)
Fax: 877.471.0562
www.exteriabp.com

Purchase Protection

Exteria stands behind its products with a competitive Limited Lifetime Warranty.

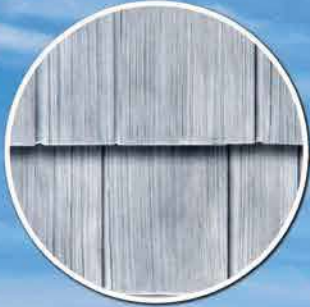
All Exteria Products are
PROUDLY



Scalloped Perfection
- Slate Gray
Pg. 29



RoughSawn Cedar EZ™
- Slate Gray
Pg. 13



Stacked Stone Premium
- Lewiston Crest
Pg. 23





DREAM IT - SEE IT!

with

DESIGN VISUALIZER

TRY IT ON

Upload a photo of your home
to the design visualizer and experiment
with different colors and siding profiles to
build the home of your dreams!

Visit:

www.exteriabp.com/design-center



Stand out in Color pg. 7

CEDAR PROFILES



Cedar Pride pg. 11



RoughSawn Cedar Collection pg. 13



Hand-Split Shake pg. 17



Cape Cod Perfection pg. 19



Scalloped Perfection pg. 29

MASONRY PROFILES



Creek LedgeStone Collection pg. 21



Stacked Stone Collection pg. 23



Hand-Laid Brick Collection pg. 25



Hand-Cut Stone Collection pg. 27

OUR PASSION - YOU AND YOUR HOME.

We strive to make your dream home *a reality*. Our products are designed to enhance your home's curb appeal while delivering a 'WOW' factor from your neighbors.

Be Unique. Be Inspired. Be Exteria.

Exteria leads the industry by combining timeless design, technology and state-of-the-art manufacturing. This results in high-quality cedar and stone composite exteriors that capture nature's imperfect beauty. Upgrade your home with a durable, near maintenance-free exterior that adds value and beauty to your home.

With 15 unique profiles and more than 100 colors, the possibilities are endless.

What does your dream home look like?



Cedar Pride EZ™ - *Antique Gray*

Whether you are a homeowner or building professional, we'll work hard so you don't have to. Choose Exteria's commitment to service and discover what it means to be part of the Exteria family. To speak to an Exteria Customer Care Associate, call (877) 398-3742.



Look for the Exteria Designer symbol for design tips, color combinations and suggestions on creating your dream home. To start your own virtual home makeover, visit www.exteriabp.com/design-center.

Featured On the Front Cover - Cedar Pride EZ™ - *Harvest Cedar*

THE EXTERIA GREEN BUILDING COMMITMENT.

We Don't Just Imitate Nature...

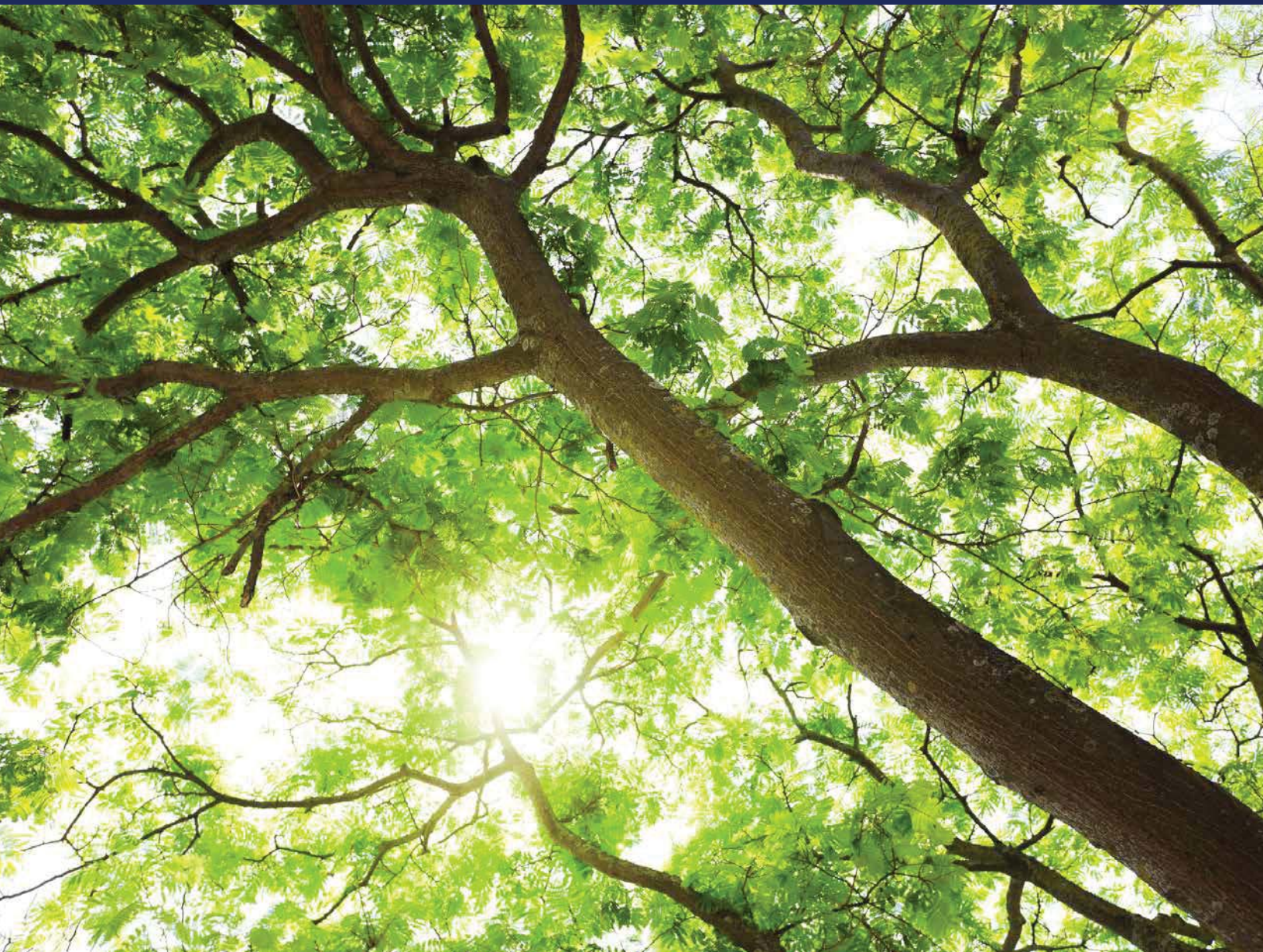
We Preserve It.

Going green is very important to Exteria.

Our products are made of the world's safest, most versatile construction polymers - polypropylene:

- Doesn't deplete natural resources by cutting down trees
- Lighter weight using less fuel during shipping
- Minimal installation waste
- Never needs to be painted

By reducing the carbon footprint of our products all the way from manufacturing to installation, we help you achieve a green home and harness the power of sustainable building for a better future. You can be confident that with Exteria you're making an environmentally sound choice.



GET MORE THAN LOOKS

MORE AUTHENTICITY:

- Sculpted using real cedar shingles, bricks and stones to create a deeper, more realistic appearance for all our composite panels
- Injection molding process allows us to capture nature's imperfect beauty
- Variation of textures and patterns create a hand-crafted look

MORE DURABILITY:

- All of our panels exceed industry standards in all water, wind and impact testing
- Panel colorant is injection molded, providing long-lasting hues and protection against surface scratches
- Mineral packed polypropylene delivers strong, solid panels that stand the test of time

MORE FREEDOM:

- No Paint. No Stain. No Worries. You'll save time as our products require little of the maintenance compared to natural products
- Freedom from rotting, paint fading and mold
- Impervious to insect damage, such as termites

MORE VALUE:

- Providing the timeless and distinguished look of cedar and masonry at a fraction of the cost
- Extertia products install faster than natural products, keeping cost low and home values high
- Save money by eliminating the expense of upkeep required by natural products



Spectacular Curb Appeal



The color blue instantly brings to mind cloudless skies and rolling seas, evoking a calm and tranquil feel. Paired with white trim accents on doors and windows create a crisp, clean look that makes a bold statement.

Color is a powerful tool that can define and enhance any home. Today's color trends are no longer confined to a home's interior. Our Color Match Series are designed to match major vinyl manufacturers' products, allowing you to enhance your home with stunning cedar accent walls that will set your home apart. These colors are matched with scientific precision, ensuring long-lasting quality.



TRANSFORM YOUR HOME FROM ORDINARY TO EXTRAORDINARY

Color Match Series B

Compares to CertainTeed Products	BB2 White Compares to CertainTeed Colonial White	BB2 Light Gray Compares to CertainTeed Sterling Gray	BB2 Granite Compares to CertainTeed Granite Gray	BB2 Beige Compares to CertainTeed Sandstone Beige	BB2 Cream Compares to CertainTeed Heritage Cream	BB2 Maple Compares to CertainTeed Light Maple	BB2 Tan Compares to CertainTeed Desert Tan
BB2 Wicker Compares to CertainTeed Savannah Wicker	BB2 Leather Compares to CertainTeed Buckskin	BB2 Cedar Compares to CertainTeed Mountain Cedar	BB2 Clay Compares to CertainTeed Natural Clay	BB2 Earth Compares to CertainTeed Hearthstone	BB2 Light Green Compares to CertainTeed Cypress	BB2 Medium Green Compares to CertainTeed Spruce	BB2 Ivy Compares to CertainTeed Ivy Green
BB2 Grey Blue Compares to CertainTeed Flagstone	BB2 Blue Compares to CertainTeed Pacific Blue						

Color Match Series C

Compares to Heartland Products	CC3 White Compares to Heartland White	CC3 Parchment Compares to Heartland Birchwood	CC3 Antique White Compares to Heartland Antique White	CC3 Natural Gray Compares to Heartland Everest	CC3 Sandcastle Compares to Heartland Sandalwood	CC3 Clay Compares to Heartland Clay	CC3 Gray Compares to Heartland Gray
CC3 Stone Compares to Heartland Stone	CC3 Fog Compares to Heartland Mist	CC3 Concrete Gray Compares to Heartland Pewter	CC3 Cream Compares to Heartland Heritage Cream	CC3 Almond Compares to Heartland Almond	CC3 Golden Tan Compares to Heartland Harvest Wheat	CC3 Caramel Compares to Heartland Camel	CC3 Coffee Compares to Heartland Mocha
CC3 Earth Compares to Heartland Canyon	CC3 Brown Compares to Heartland Pueblo	CC3 Sage Compares to Heartland Sage	CC3 Moss Compares to Heartland Aspen	CC3 Nautical Blue Compares to Heartland Nautical			

CertainTeed™, Heartland™, Royal Building Products™, Exterior Portfolio™ products & trademarks are not affiliated with Exteria Building Products

Color Match Series D



DD4 Cream
Compares to Royal Building Products Vintage Cream



DD4 Maple
Compares to Royal Building Products Soft Maple



DD4 Beige
Compares to Royal Building Products Driftwood



DD4 Sand
Compares to Royal Building Products Sand



DD4 Light Gray
Compares to Royal Building Products Sterling



DD4 Medium Gray
Compares to Royal Building Products Victorian Gray



DD4 Cypress
Compares to Royal Building Products Cypress



DD4 Wicker
Compares to Royal Building Products Wicker



DD4 Heather
Compares to Royal Building Products Heather



DD4 Slate
Compares to Royal Building Products Harvard Slate



DD4 Clay
Compares to Royal Building Products Pebble Clay



DD4 Walnut
Compares to Royal Building Products Walnut



DD4 Cedar
Compares to Royal Building Products Natural Cedar

CertainTeed™, Heartland™, Royal Building Products™, Exterior Portfolio™ products & trademarks are not affiliated with Exteria Building Products

Color Match Series E



EE5 Avalanche
Compares to Exterior Portfolio Aspen White



EE5 Cashew
Compares to Exterior Portfolio Wheat



EE5 Country Oak
Compares to Exterior Portfolio Country Beige



EE5 Macadamia
Compares to Exterior Portfolio Pearl



EE5 Cashmere
Compares to Exterior Portfolio Saddle



EE5 Ivory
Compares to Exterior Portfolio Bone



EE5 Latte
Compares to Exterior Portfolio Mocha



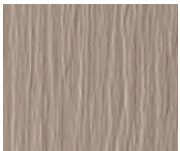
EE5 Barley
Compares to Exterior Portfolio Rye



EE5 Platinum
Compares to Exterior Portfolio Driftwood



EE5 Castle
Compares to Exterior Portfolio Greystone



EE5 Cork
Compares to Exterior Portfolio Clay



EE5 Cognac
Compares to Exterior Portfolio Desert



EE5 Artichoke
Compares to Exterior Portfolio Cypress



EE5 Iceberg
Compares to Exterior Portfolio Harbor Blue



EE5 Dark Roast
Compares to Exterior Portfolio Espresso

ü stand out in colour.



THE WEATHERED SERIES

Instantly Aged to Perfection

The Weathered Series perfectly portrays the timeless elegance and spectacular curb appeal of naturally aging cedar. Designed to capture the essence of time; from newly installed to decades of sun exposure.

- **Realistic Weathering** - Balanced tone and textures simulate nature's imperfect beauty
- **Authentic Beauty** - The look of naturally aged cedar
- **Lasting Appearance** - Our proprietary UV Coating System protects against fading and ensures decades of good looks
- **Available in 5 Cedar Profiles** - Cedar Pride, Hand-Split Shake, RoughSawn Cedar Collection (Single, Dual & Staggered)



RoughSawn Cedar EZ™ - Seaside Gray



Antique Gray /
*Weathered White



Seaside Gray



Sunset Cedar /
*Traditional Cedar



Autumn Cedar



Harvest Cedar /
*Natural Cedar



Newport Cedar

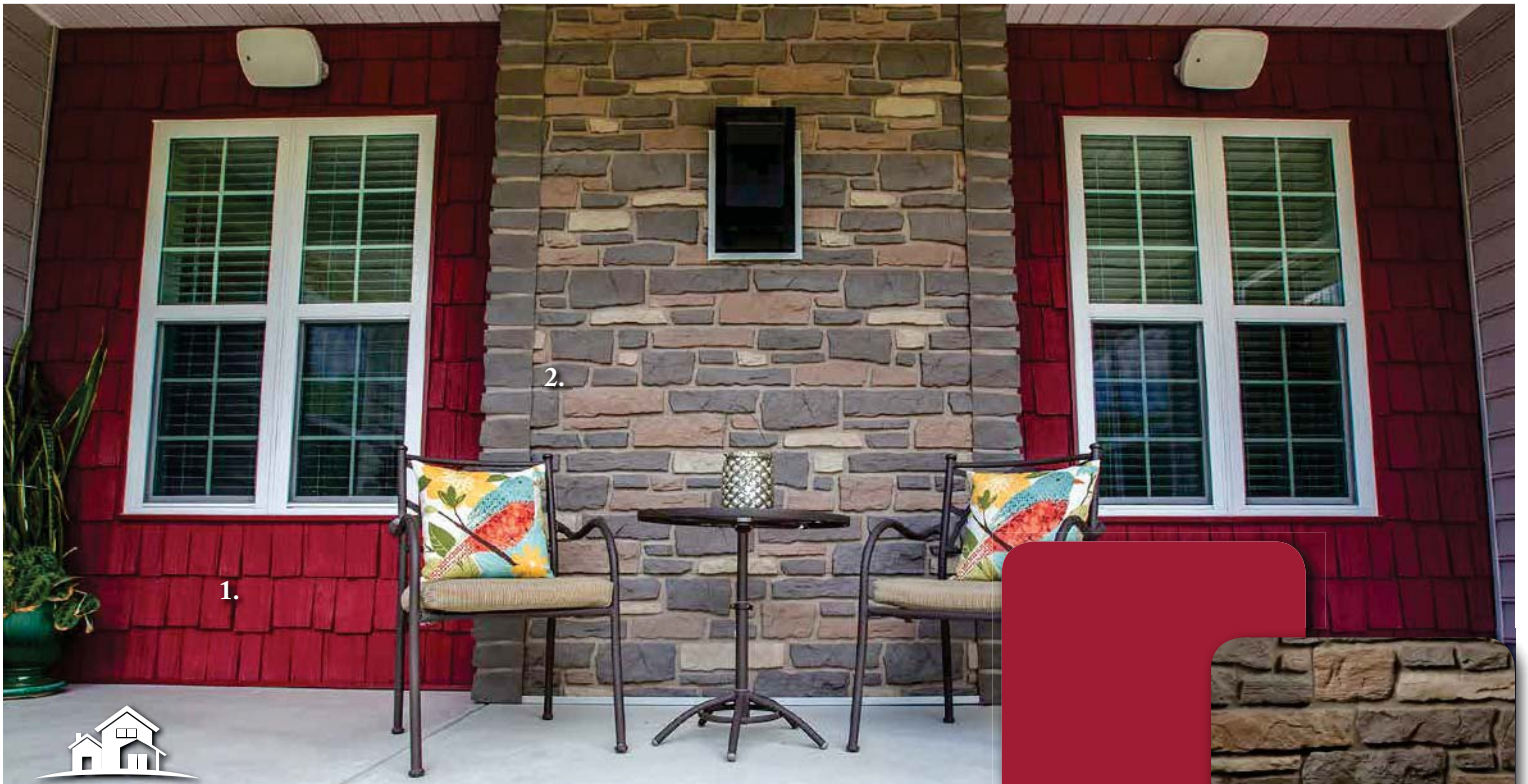
*Denote color names for Hand-Split Shake EZ™

THE PERFECT PAIR

Mix and match our Cedar and Masonry profiles for a dramatically new look for your home. Wrap your home in color combinations that reflect your unique personality and style.



For a softer, complementary appearance, we paired our **Cedar Pride¹** shake in **Wicker**, with **Ledge Trim²** in **Clay** and **Stacked Stone Premium³** in **Chestnut Hills**. The Wicker and Clay colors combine to establish depth and texture on the wall, while their hues blend incredibly well with the natural earth tones of Chestnut Hills stacked stone.



For a strikingly bold appearance, we've paired **Creek LedgeStone²** in **Bucks County Gray**, with **Hand-Split Shake¹** in bright **Barn Red**. The softer natural browns and grays found in the Creek LedgeStone contrast the bright red of Hand-Split Shake, providing a stunning look that is sure to turn heads.



CEDAR PRIDE EZ™

This profile is a tribute to authentic cedar shake. With a 9-inch shingle exposure, staggered edges and deep wood-grain texture, this beautiful design will evoke pride each and every time you arrive home.

Rustic meets Irresistible

- The most realistic look of any product on the market
- Two different panel designs within each carton designed to eliminate repetition
- Each shingle is dramatically grained and deeply textured
- Shingle widths and depths are unique, forming a hand-crafted appearance



COLOR PALETTE



Classic White



Pale Yellow



Eggshell



Desert Sand



Wicker



Wheat



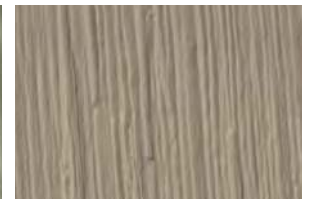
Khaki



Coastal Cedar



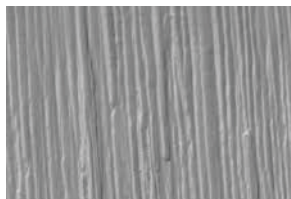
Cypress Green



Desert Clay



Ashwood Gray



Slate Gray



Flagstone Blue



Coastal Clay



Coastal Brown



A Tribute To Time.

Cedar Pride EZ™ - Harvest Cedar

INNOVATIONS IN REALISM



Realistic grain & texture

Staggered shingle edges for hand-crafted appearance

Varied shingle widths provide unparalleled beauty

For additional gallery images please visit: www.exteriabp.com



All the **Beauty.**
None of the **Work.**

RoughSawn Cedar EZ™ - *Antique Gray*

INNOVATIONS IN REALISM

ROUGHSAWN CEDAR EZ™ - DUAL COURSE



Deeply-grained
and textured

Uniform edges for clean,
crisp look

Varied shingle widths

ROUGHSAWN CEDAR SINGLE EZ™



Shingle widths & edges designed
to eliminate repetition



- Seaside Gray

ROUGHSAWN CEDAR COLLECTION

ROUGHSAWN CEDAR EZ™ & ROUGHSAWN CEDAR SINGLE EZ™

RoughSawn Cedar EZ™ with its 6 ½-inch shingle exposure offers the timeless look of rough-cut cedar shake. This down-to-earth style will make your home an object of admiration.

So Real, You'll Think You Smell Cedar

- Exhibits a look that is highly sought after; classic, yet contemporary
- Deeply grained pattern captures cedar's natural imperfections
- Shingle edges align evenly for a clean, well-crafted appearance



- Denim Blue

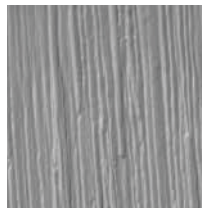
COLOR PALETTE



Classic White



Ashwood Gray



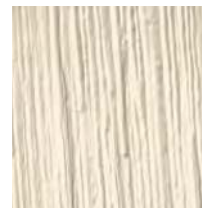
Slate Gray



Pale Yellow



Canary Yellow



Eggshell



Desert Sand



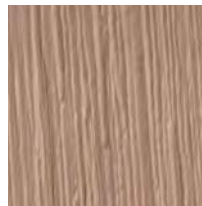
Wicker



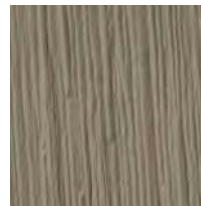
Wheat



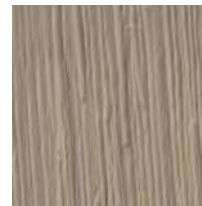
Khaki



Coastal Cedar



Coastal Clay



Desert Clay



Coastal Brown



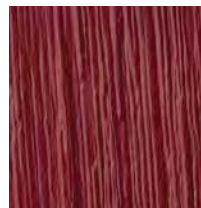
Cypress Green



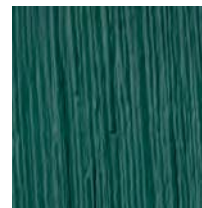
Flagstone Blue



Denim Blue



Barn Red



Forest Green

NOTE: Colors shown are as accurate as the printing process enables. Please view actual panels prior to making your purchase. Sample panels are available at www.exteriabp.com.

ROUGHSAWN CEDAR STAGGERED EZ™

ROUGHSAWN CEDAR COLLECTION

The distinguished elegance of RoughSawn Cedar, re-imagined with enhanced details. This staggered shingle profile highlights the unique qualities of authentic cedar, while virtually eliminating maintenance. Capture the essence you've been searching for with RoughSawn Cedar Staggered.

Classic RoughSawn. Re-Imagined.

- Exhibits a timeless, yet rugged look
- New staggered shingle edges
- Varied shingle widths & heights enhance the hand-crafted look



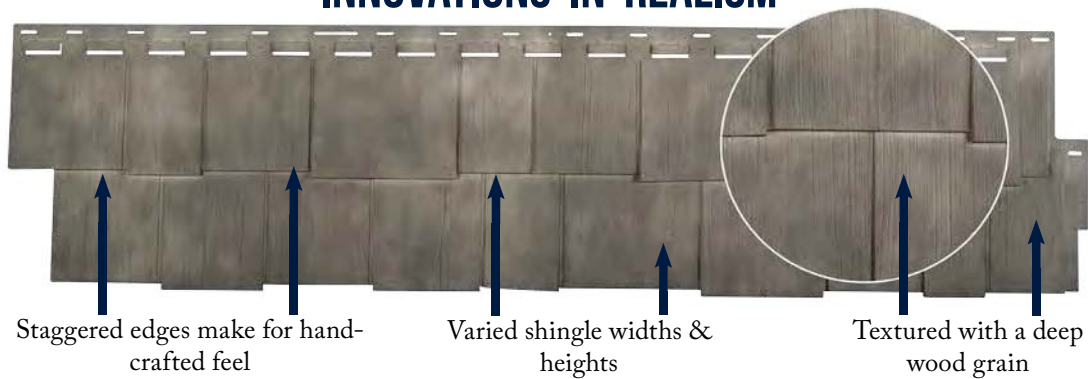
COLOR PALETTE





RoughSawn Cedar Staggered EZ™ - Antique Gray

INNOVATIONS IN REALISM



Staggered edges make for hand-crafted feel

Varied shingle widths & heights

Textured with a deep wood grain

Looks Without Labor.
That's the **Beauty** of Exteria.



Hand-Split Shake EZ™ - Barn Red

INNOVATIONS IN REALISM

Staggered shingle edges
provide a rustic feel



Exhibiting a
deep wood grain
texture, grooves
and varied knots



- Potter's Clay

HAND-SPLIT SHAKE EZ™

Exteria's Hand-Split Shake perfectly captures the rugged look of hand-cut cedar shake. The rough, uneven 8 ¾-inch shingle exposure emphasizes the hand-crafted look, while the deep wood grain texture and varied knots enhance the interplay of light and shadows across your home.

Capture Nature's Imperfect Beauty

- Deep grooves and varied knots spread across the rough surface
- Staggered shingle edges capture the hand-crafted look
- Each shingle is individually textured to eliminate repetition



Traditional Cedar

COLOR PALETTE



CAPE COD PERFECTION EZ™

The 4 ½-inch shingle exposure of Cape Cod Perfection flawlessly portrays a clean, crisp look. The evenly aligned shingle edges and overlapping shadows pay tribute to coastal traditions.

Breathtaking Natural Beauty

- A classic exterior that stands the test of time
- Finely etched texturing
- Uniform shingle edges create a polished appearance



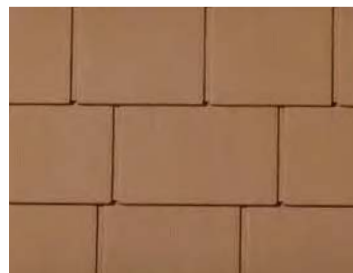
COLOR PALETTE



Classic White



Desert Sand



Khaki



Ashwood Gray



Slate Gray



Desert Clay



Denim Blue



Barn Red

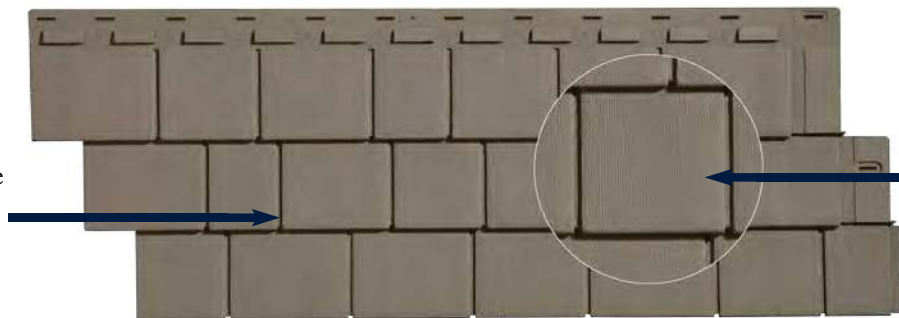
The Style You Want.
The Home You Deserve.



Cape Cod Perfection EZ™ - Slate Gray

INNOVATIONS IN REALISM

Evenly aligned shingle edges enhance the well-crafted look



Exhibiting finely etched details

Make a **Statement,**
Without Saying a **Word.**



Creek Ledgestone Premium - Bucks County Gray
Hand-Split Shake EZ™ - Barn Red

ENHANCED SERIES



Amber Falls



Terra Cotta



Sakkara



Ridge Peak

Arriving Early
2015



Smokey Mountain



-Arizona Sandstone

CREEK LEDGESTONE COLLECTION

The revolutionary realism of Creek Ledgestone makes it as distinguished as old-world masonry. Crafted using real field and ledge stones as inspiration and incorporating new textural and visual cues resulting in a unmistakable depiction of natural stone.

Bring Untamed Home Beauty

- Exhibiting subtle hand-finished weathering details
- Proprietary process delivers a matte surface with a grit finish, creating stone texture - realism you can feel
- Regional color pairings provide an unprecedented level of variation throughout each collection



-Bucks County Gray

PREMIUM SERIES



Appalachian Ash



Arizona Sandstone



Bucks County Gray



Golden Montana



Rocky Mountain Clay

STACKED STONE COLLECTION

Exteria's Stacked Stone collection is masterfully crafted using real stone as inspiration. Its intricately designed pattern delivers a new level of craftsmanship and sophistication.

Make a Lasting Impression

- Alternating stone patterns provide depth and texture
- Exhibits multiple color palettes to satisfy regional tastes
- Proprietary process in the Premium Series delivers a matte surface with a grit finish - realism you can touch
- Original Series offers monotonal color variations, while the Premium series delivers multi-tonal palettes



ORIGINAL SERIES



Dry Creek



Rustic Rock



Prairie Cream



Mojave



Mountain Ash



Sierra Brown



Desert Sunset

Accentuating the **Positive** Has
Never Been So Easy.



1.



1. - *Sedona Bluff*



Consider Extertia's Stacked Stone Premium¹ as an accent wall to add dimension to your home. The natural stone colors complement the white vinyl, while the red shutters and door draw the eye in.

PREMIUM SERIES



Sedona Bluff



Santa Fe



Chestnut Hills

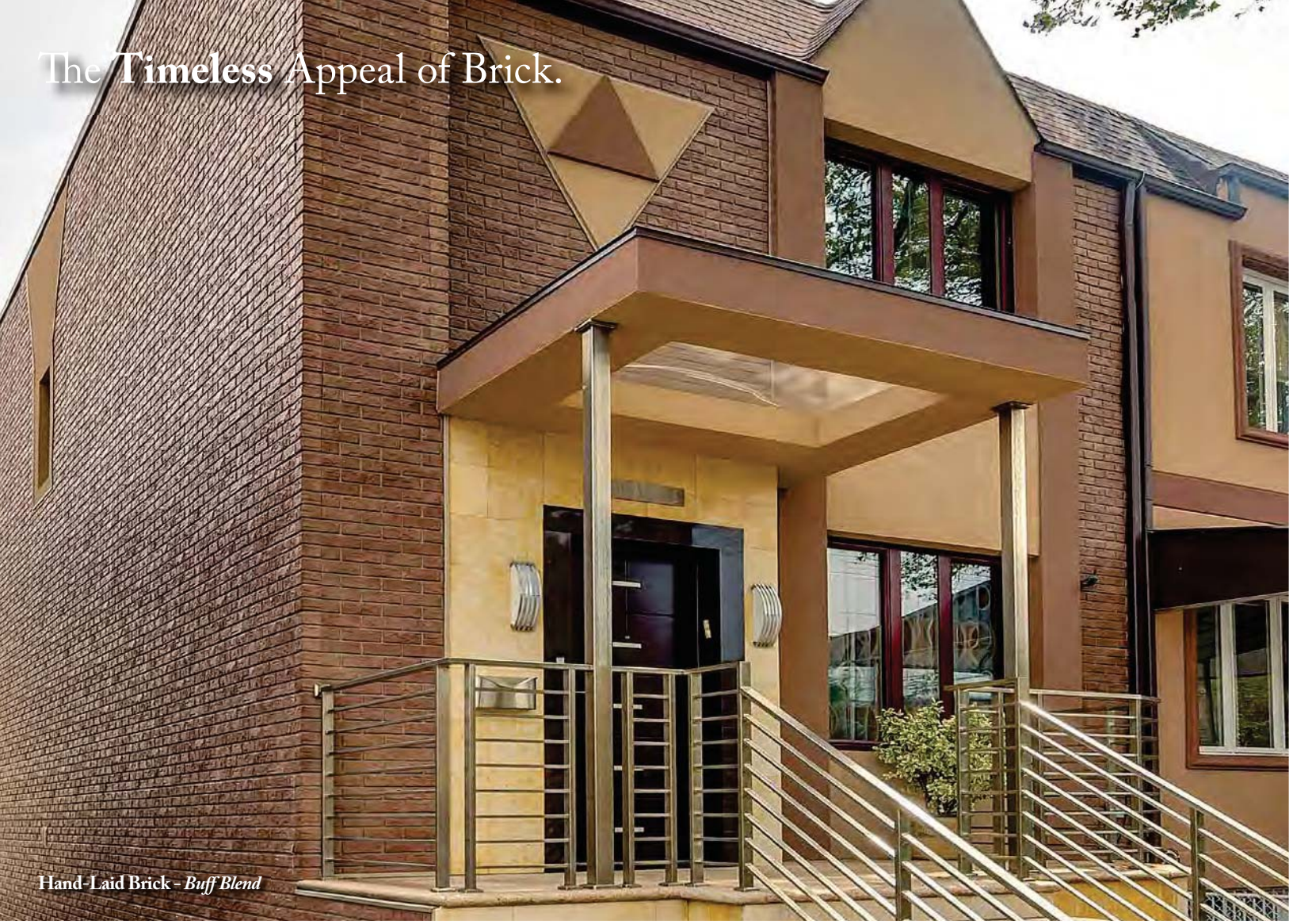


Lewiston Crest



Shadow Ridge

The Timeless Appeal of Brick.



Hand-Laid Brick - Buff Blend

ORIGINAL SERIES



Buff Blend



Used Buff



Used Red



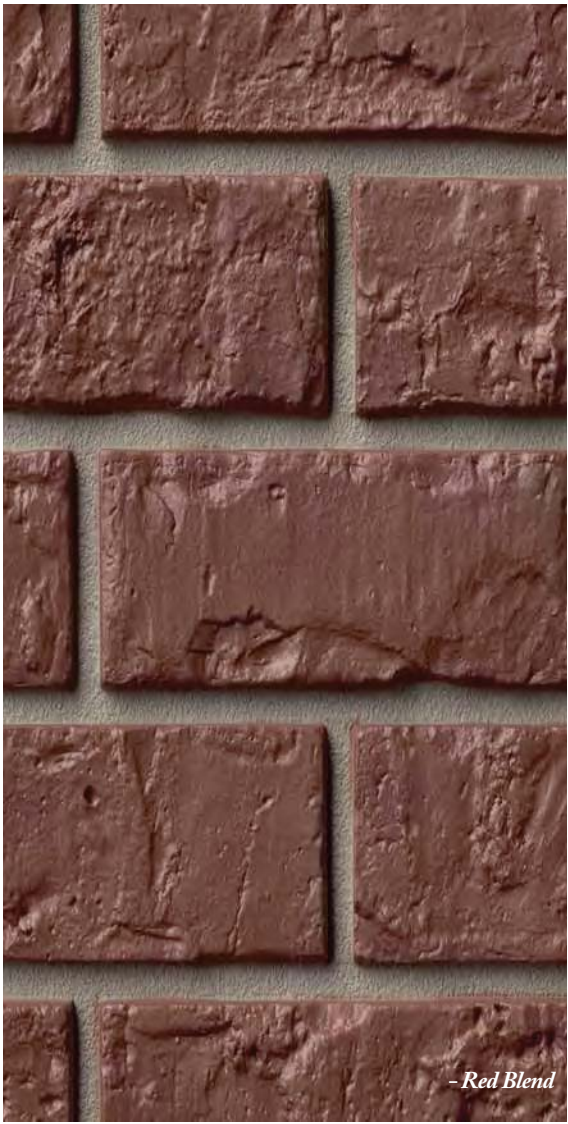
Red Blend



Colonial White



Char Brown



- Red Blend

HAND-LAID BRICK COLLECTION

Make a lasting impression with the classic look of hand-laid brick. True to its inspiration, Exteria's Hand-Laid Brick has the look, dimension and mortar lines of the real thing. Breathtakingly realistic from the curb to the front door.

Substance and Style

- Sculpted from real brick for unmatched realism
- Crisp, clean mortar lines give your home a polished appearance that will enhance curb appeal and home value
- Proprietary process in the Enhanced Series delivers a low gloss surface with a matte finish



- Williamsburg

ENHANCED SERIES



Williamsburg



Cambridge



Dover



Edgemont

HAND-CUT STONE COLLECTION

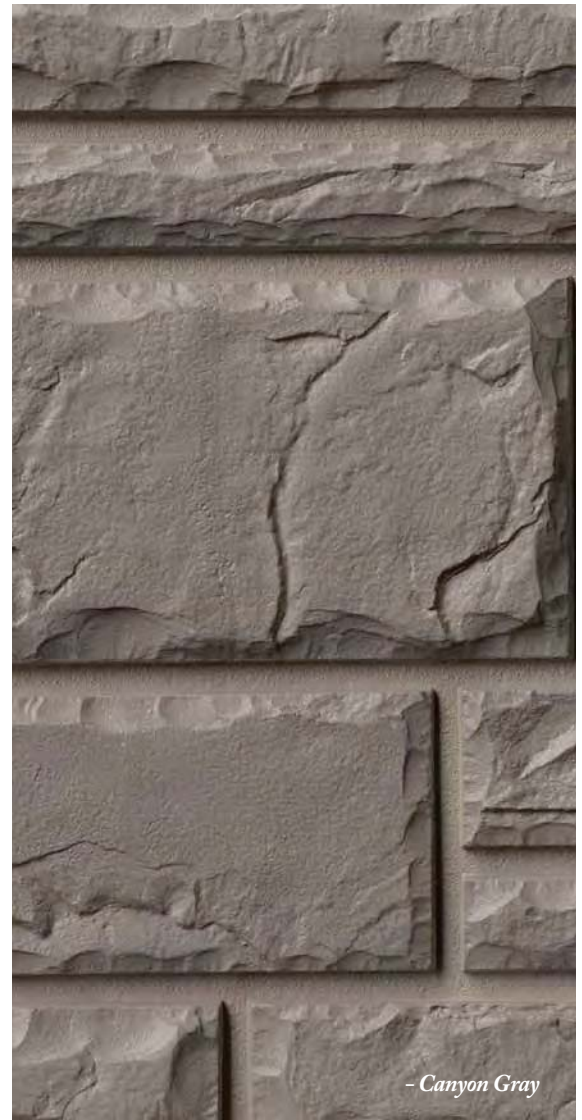
There's an aura of classic beauty and permanence to a home built with stone. It's a look that never loses its distinctive style or prestige. Exteria's Hand-Cut Stone captures the unique characteristics of cut stone with a quality that goes far deeper than its surface.

Aesthetics without Expense

- Meticulously crafted from hand-cut stone
- Staggered and alternating courses eliminate repetition
- Proprietary process in the Enhanced Series delivers a low gloss surface with a matte finish
- Perfect as an accent wall or full-home application



- Mountain Red



- Canyon Gray

ORIGINAL SERIES



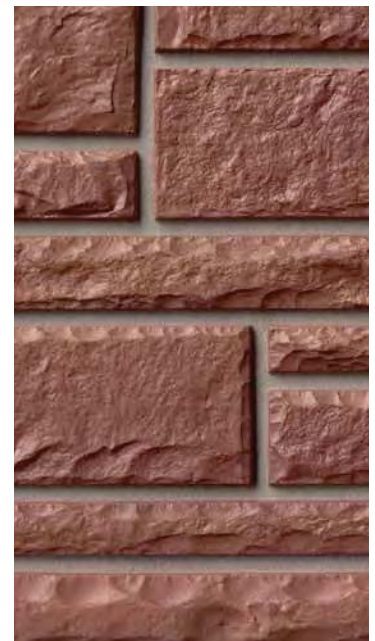
Glacier White



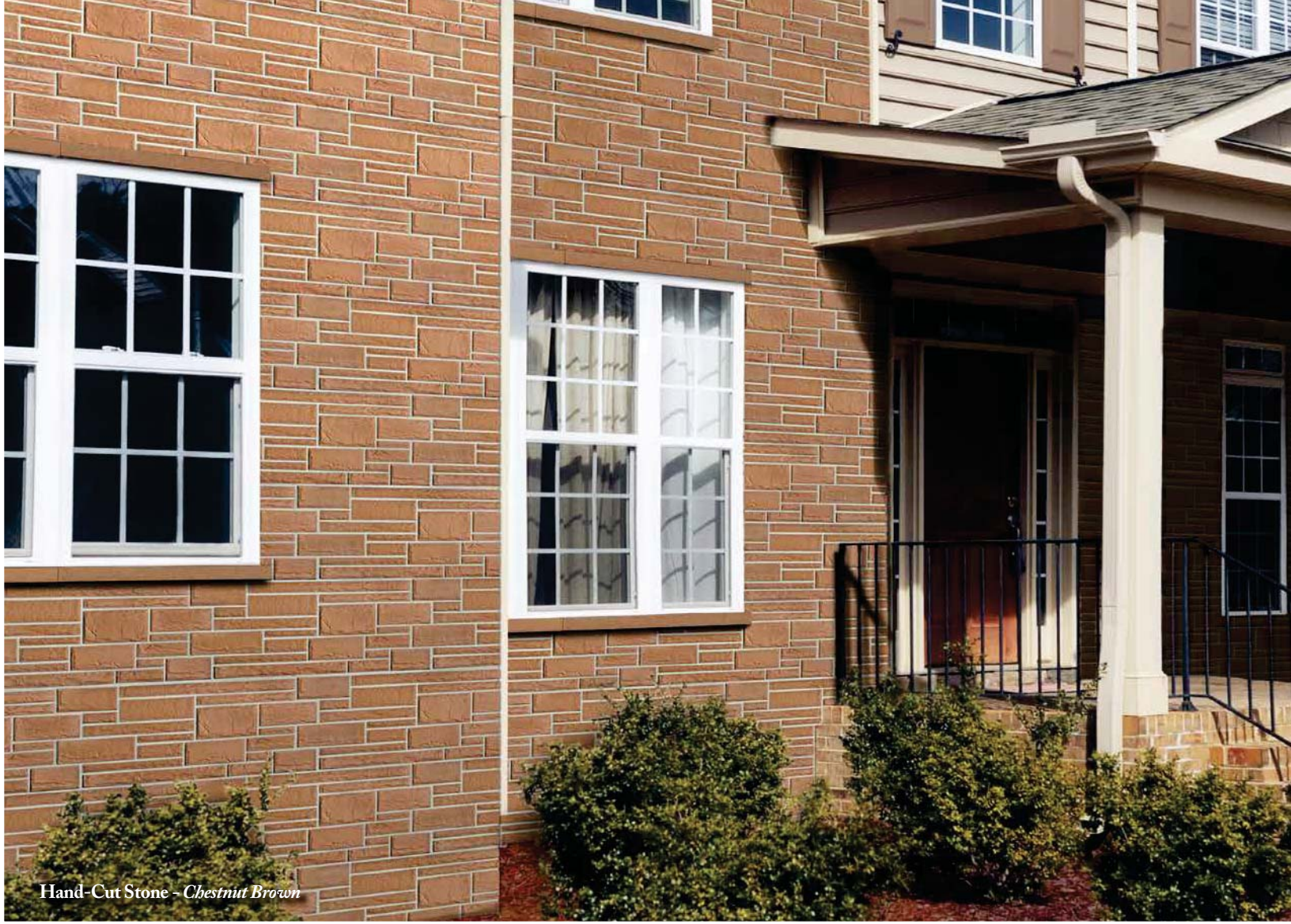
Desert Buff



Canyon Gray



Mountain Red



Hand-Cut Stone - Chestnut Brown

ENHANCED SERIES



Winter White



Adobe Clay



Coral Red



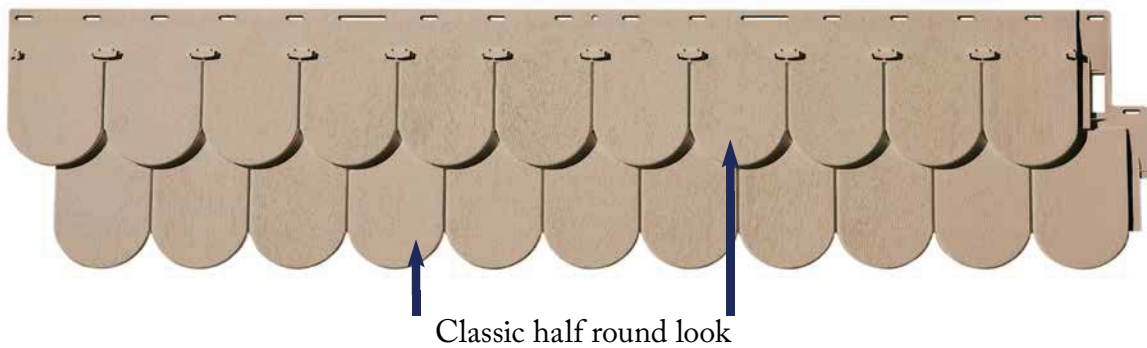
Chestnut Brown

SCALLOPED PERFECTION

Exteria's Scalloped Perfection can help make your home the focus, with eye-catching curves. Use as an accent or to add a flare of personality to your home as unique as you. The neatly sculpted rows and pristine appearance conjure images of a coastal cottage.

Enjoy Your Escape

- Undulating curves create a perfect classical look
- Matching lines provide uniform appearance
- 8-inch face with authentic cedar grain texture



COLOR PALETTE



Classic White



Eggshell



Ashwood Gray



Slate Gray

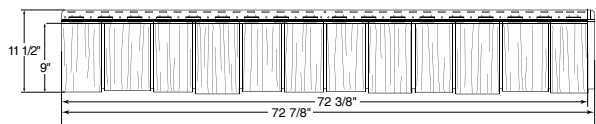


Desert Clay

EXTERIA PANEL AND CORNER DIMENSIONS

Cedar Pride – Hand-Split Shake – Cape Cod Perfection – RoughSawn Cedar Collection (Single, Dual & Staggered)

Cedar Pride EZ™

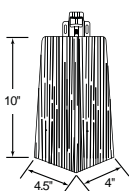


Panel Dimensions:

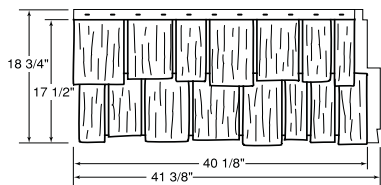
Overall	72 7/8" w x 11 1/2" h
Exposed	72 3/8" w x 9" h
Material	Polypropylene
Pieces per carton	11
Approx. sq. ft. per carton	50
Carton weight	37 lbs. Solid 47 lbs. Weathered
Cubic ft. per carton	3.08

Cedar Pride EZ™ Universal 90° Outside Corner

Dimensions, exposed	4" x 4 1/2" x 10" h
Material	Polypropylene
Pieces per carton	14
Linear ft. per carton	10.5
Carton weight	6 lbs.
Cubic ft. per carton	<1.0



Hand-Split Shake EZ™

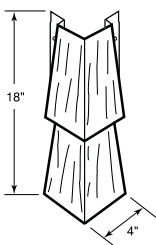


Panel Dimensions:

Overall	41 3/8" w x 18 3/4" h
Exposed	40 1/8" w x 17 1/2" h
Material	Polypropylene
Pieces per carton	10
Approx. sq. ft. per carton	50
Carton weight	32 lbs. Solid 38 lbs. Weathered
Cubic ft. per carton	4.34

Hand-Split Shake EZ™ 90° Outside Corner

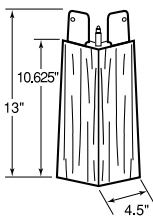
Dimensions, exposed	4" x 4" x 18" h
Material	Polypropylene
Pieces per carton	10
Linear ft. per carton	15
Carton weight	8 lbs.
Cubic ft. per carton	1.7



Hand-Split Shake EZ™ M Series Corner

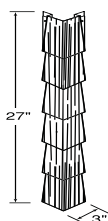
Dimensions, exposed	4 1/2" x 4 1/2" x 9 to 10" h
Material	Polypropylene
Pieces per carton	16
Linear ft. per carton	12-13 ft. variable
Carton weight	12 lbs.
Cubic ft. per carton	2.13

*Adjustable 1 inch overlap on stacked corners

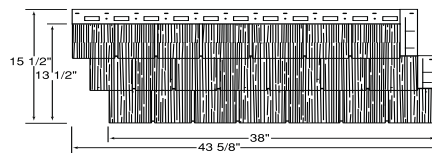


Cape Cod Perfection EZ™ 90° Outside Corner

Dimensions, exposed	3" x 3" x 27" h
Material	Polypropylene
Pieces per carton	5
Linear ft. per carton	11.3
Carton weight	6 lbs.
Cubic ft. per carton	1



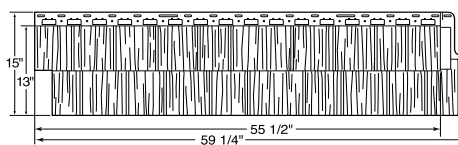
Cape Cod Perfection EZ™



Panel Dimensions:

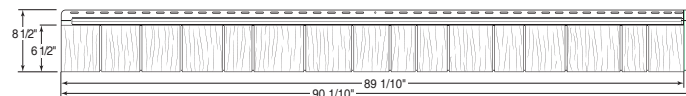
Overall	43 5/8" w x 15 1/2" h
Exposed	38" w x 13 1/2" h
Material	Polypropylene
Pieces per carton	14
Approx. sq. ft. per carton	50
Carton weight	49 lbs.
Cubic ft. per carton	3.2

RoughSawn Collection



Panel Dimensions – RoughSawn Cedar Dual EZ™

Overall	59 1/4" w x 15" h
Exposed	55 1/2" w x 13" h
Material	Polypropylene
Pieces per carton	10
Approx. sq. ft. per carton	50
Carton weight	37 lbs. Solid 45 lbs. Weathered
Cubic ft. per carton	3.75 ft



Panel Dimensions – RoughSawn Single EZ™

Overall	90 1/10" w x 8 1/2" h
Exposed	89 1/10" w x 6 1/2" h
Material	Polypropylene
Pieces per carton	12
Approx. sq. ft. per carton	50
Carton weight	40 lbs.
Cubic ft. per carton	2.8 ft



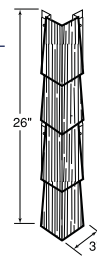
Panel Dimensions – RoughSawn Cedar Staggered EZ™

Overall	59 1/4" w x 15 1/4" h
Exposed	55 1/2" w x 13 1/2" h
Material	Polypropylene
Pieces per carton	10
Approx. sq. ft. per carton	50
Carton weight	37 lbs. Weathered 43 lbs.
Cubic ft. per carton	3.4

RoughSawn Cedar Collection 90° Outside Corner

Dimensions, exposed	3" x 3" x 26" h
Material	Polypropylene
Pieces per carton	5
Linear ft. per carton	10.8
Carton weight	6 lbs.
Cubic ft. per carton	1.0

–Use for both Single, Dual & Staggered

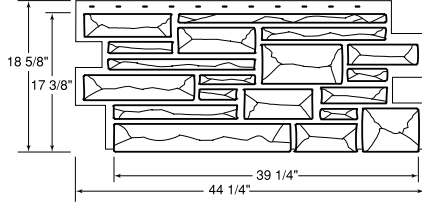


EXTERIA PANEL AND CORNER DIMENSIONS

Hand-Laid Brick – Hand-Cut Stone – Stacked Stone – Creek Ledgestone – Scalloped Perfection

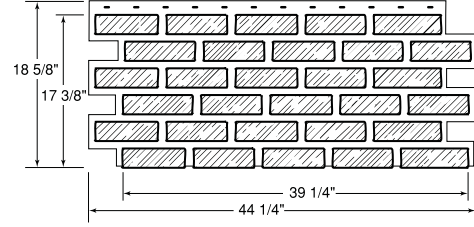
Hand-Cut Stone

Panel Dimensions:		Approx. sq. ft. per carton	50
Overall	44 1/4" w x 18 5/8" h	Cubic ft. per carton	4.84
Exposed	39 1/4" w x 17 3/8" h	Carton weight	48 lbs.
Material	Polypropylene		
Pieces per carton	10		



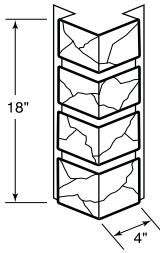
Hand-Laid Brick

Panel Dimensions:		Approx. sq. ft. per carton	50
Overall	44 1/4" w x 18 5/8" h	Cubic ft. per carton	3.91
Exposed	39 1/4" w x 17 3/8" h	Carton weight	48 lbs.
Material	Polypropylene		
Pieces per carton	10		



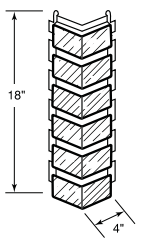
Hand-Cut Stone 90° Corner

Dimensions, exposed	4" x 4" x 18" h
Material	Polypropylene
Pieces per carton	10
Linear ft. per carton	15
Cubic ft. per carton	1.5
Carton weight	9 lbs.



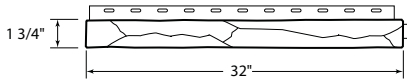
Hand-Laid Brick Corner (J-Channel or Butt Edge)

Dimensions, exposed	4" x 4" x 18" h
Material	Polypropylene
Pieces per carton	10
Linear ft. per carton	15
Cubic ft. per carton	1.4
Carton weight	8 lbs.
Available in	J-Channel and Butt Edge



Hand-Cut Stone Ledge Trim

Dimensions, exposed	32" x 1 3/4" x 1 7/8" d
Material	Polypropylene
Pieces per carton	10
Linear ft. per carton	26.75
Cubic ft. per carton	0.7
Carton weight	10 lbs.



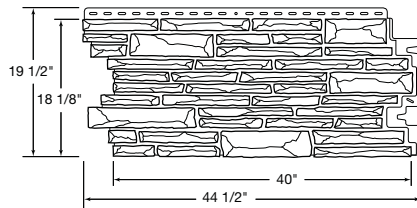
Hand-Laid Brick Ledge Trim

Dimension	36" w x 3 5/8" h x 1 1/4" d
Material	Polypropylene
Linear ft. per carton	30
Pieces per carton	10
Carton weight	10 lbs.
Cubic ft. per carton	1.3



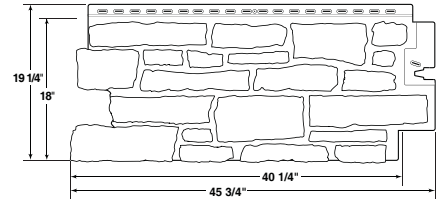
Stacked Stone Original & Premium Panel

Dimensions:	
Overall	44 1/2" w x 19 1/2" h
Exposed	40" w x 18 1/8" h
Material	Polypropylene
Pieces per carton	10
Approx. sq. ft. per carton	50
Carton weight:	54 lbs



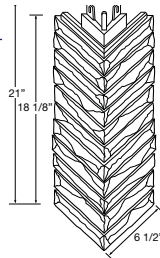
Creek Ledgestone Premium Panel

Dimensions:	
Overall	45 3/4" w x 19 1/4" h
Exposed	40 1/4" w x 18" h
Material	Mineral filled polypropylene composite
Pieces per carton	10
Approx. sq. ft. per carton	50
Carton weight:	48 lbs



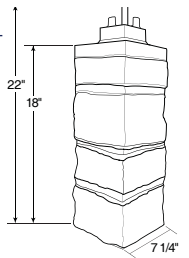
Stacked Stone Original & Premium Corner

Dimensions:	
Overall	6 1/2" x 6 1/2" x 21" h
Exposed	6 1/2" x 6 1/2" x 18 1/8" h
Material	Polypropylene
Pieces per carton	6
Approx. sq. ft. per carton	9.2 lin. ft.



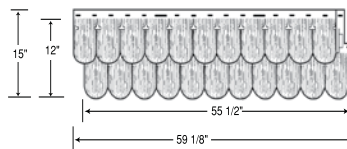
Creek Ledgestone Premium Corner

Dimensions:	
Overall	7 1/4" x 7 1/4" x 22" h
Exposed	7 1/4" x 7 1/4" x 18 1/8" h
Material	Polypropylene
Pieces per carton	5
Approx. sq. ft. per carton	7.5 lin. ft.



Scalloped Perfection

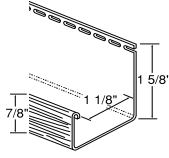
Panel Dimensions:		Approx. sq. ft. per carton	50
Overall	59 1/8" w x 15" h	Carton weight	34 lbs.
Exposed	55 1/2" w x 12" h	Cubic ft. per carton	3.36
Material	Polypropylene		
Pieces per carton	10		



EXTERIA COORDINATING ACCESSORIES

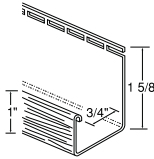
J-Channel 1 1/8" Opening

Packaged	300 lin. ft., 24 pcs./carton
Length	12 ft., 6 in.
Carton weight	33 lbs.
Material	Polyvinyl Chloride (PVC)
Finish	Matte
Use with	Cedar Pride EZ™, Hand-Split Shake EZ™, All Masonry



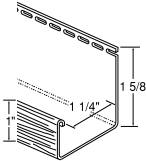
J-Channel 3/4" Opening

Packaged	500 lin. ft., 40 pcs./carton
Length	12 ft., 6 in.
Carton weight	58 lbs.
Material	Polyvinyl Chloride (PVC)
Finish	Matte
Use with	RoughSawn Cedar Collection, Cape Cod Perfection EZ™, Scalloped Perfection



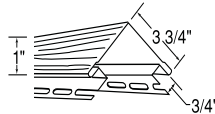
Flexible J-Channel 1 1/4" Opening

Packaged	126 lin. ft., 10 pcs./carton
Length	12 ft., 6 in.
Carton weight	33 lbs
Material	Polyvinyl Chloride (PVC)
Finish	Flat White only
Use with	Hand-Split Shake EZ™



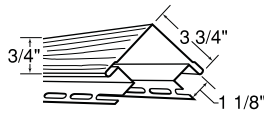
3 3/4" Outside Corner Post 3/4" Opening

Packaged	100 lin. ft., 10 pcs./carton
Length	10 ft.
Carton weight	42 lbs
Material	Polyvinyl Chloride (PVC)
Finish	Wood Grain
Use with	RoughSawn Cedar Collection Cape Cod Perfection EZ™ and Scalloped Perfection





3 3/4" Outside Corner Post 1 1/8" Opening

Packaged	100 lin. ft., 10 pcs./carton
Length	10 ft.
Carton weight	42 lbs.
Material	Polyvinyl Chloride (PVC)
Finish	Wood Grain
Use with	Cedar Pride EZ™, Hand-Split Shake, Hand-Laid Brick, Hand-Cut Stone



Mortar Fill

If using the 90° outside corners, mortar fill is required to caulk the vertical line created where the panel meets the corner.

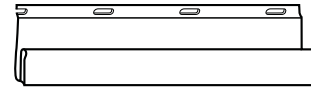
Container	Tube	 
Tubes per container	12 tubes	
Cubic feet	0.4 cu.ft.	
Carton weight	16 lbs. (7.25 kg)	
Available color	Mortar line gray	
Use with:	Hand-Laid Brick and Hand-Cut Stone	

If caulk is used with Stacked Stone Original and Stacked Stone Premium, we recommend crystal clear caulk commonly available at local hardware stores.

*For more information on caulk matched to Exteria product colors, please contact Boss® Products at 800.928.2677 or 270.769.3385 or online at www.bossproducts.com.

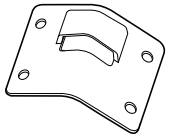
Universal Starter Strip

Packaged	250 lin. ft., 25 pcs./carton
Length	10'
Carton Weight	39 lbs. per carton
Material	Galvanized steel
Use With	All Exteria panels except Scalloped Perfection



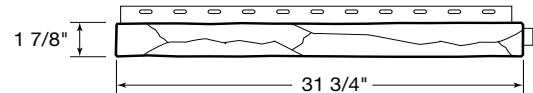
Universal Corner Starter Clip

Packaged	2 pieces provided in each carton of Cedar Pride corners, 6 in Stacked Stone Original & Premium, and 5 in Creek LedgeStone
Material	Polypropylene
Use With	Cedar Pride corners, All Stacked Stone corners, All Creek LedgeStone corner, first course only



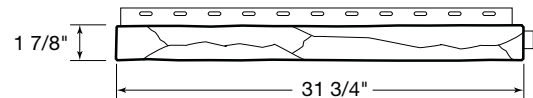
Premium Ledge Trim

Dimension	31 3/4" w x 1 7/8" h x 1 3/4" d
Material	Textured Polypropylene Composite
Linear ft. per carton	26.75
Pieces per carton	10
Carton weight	10 lbs.
Cubic ft. per carton	0.7
Use With	All Stacked Stone, All Creek LedgeStone



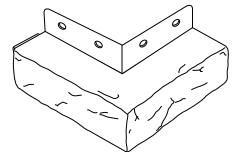
Stacked Stone Original Ledge Trim

Dimension	31 3/4" w x 1 7/8" h x 1 3/4" d
Material	Untextured Polypropylene Composite
Linear ft. per carton	26.75
Pieces per carton	10
Carton weight	10 lbs.
Cubic ft. per carton	0.7 cu. ft.
Use with	Stacked Stone Original
Available colors:	Sierra Brown & Desert Sunset



90° Ledge Trim Corner

Dimensions:	
Overall	5 1/2" x 6" x 3" h
Exposed	5 1/2" x 5 3/4" x 1 3/4" h
Material	Polypropylene composite
Angle	90 degrees
Carton Weight	1.45 lbs.
Cubic ft. per carton	1.3
Used with	Creek LedgeStone & Stacked Stone



Scalloped Perfection Starter Clip

Packaged	24 pcs./carton
Weight	7 lbs.
Material	Coated metal
	Use with Scalloped Perfection panels, 5 per panel, starter courses only



EXTERIA CEDAR PANEL COLOR & ACCESSORY MATRIX

PRODUCT KEY	PANEL COLOR	PRODUCT AVAILABILITY	ACCESSORY COLOR	3/4" J-CHANNEL	3/4" OSC POST	1 1/8" J-CHANNEL	1 1/8" OSC POST	
CEDAR PRIDE	Classic White / Cottage White	■ ■ ■ ■ ■	White	■ ■ ■	■ ■ ■	■ ■	■ ■	
	Eggshell / Birchwood	■ ■ ■ ■ ■	Off White	■ ■ ■	■ ■ ■	■ ■	■ ■	
	Ashwood / Driftwood	■ ■ ■ ■ ■	Light Gray	■ ■ ■	■ ■ ■	■ ■	■ ■	
	Slate / Granite Gray	■ ■ ■ ■ ■	Dark Gray	■ ■ ■	■ ■ ■	■ ■	■ ■	
	Desert Clay / Potter's Clay	■ ■ ■ ■ ■	Clay	■ ■ ■	■ ■ ■	■ ■	■ ■	
ROUGHSAWN CEDAR COLLECTION (SINGLE, DUAL, STAGGERED)	Pale Yellow	■ ■	Pale Yellow	■	■	■	■	
	Canary Yellow	■	Canary Yellow	■	■			
	Desert Sand	■ ■ ■ ■ ■	Beige	■ ■	■ ■	■ ■	■ ■	
	Wicker	■ ■ ■ ■ ■	Wicker	■	■	■ ■	■ ■	
	Wheat	■ ■ ■ ■ ■	Wheat	■	■	■ ■	■ ■	
	CAPE COD PERFECTION	Khaki	■ ■ ■ ■ ■	Tan	■ ■	■ ■	■ ■	■ ■
		Coastal Brown	■ ■ ■ ■ ■	Dark Brown	■	■	■ ■	■ ■
		Coastal Clay	■ ■ ■ ■ ■	Variiegated	■	■	■ ■	■ ■
		Coastal Cedar	■ ■ ■ ■ ■	Medium Brown	■	■	■ ■	■ ■
	SCALLOPED PERFECTION	Barn Red	■ ■ ■ ■ ■	Red	■ ■	■ ■	■ ■	■ ■
Denim Blue		■ ■ ■ ■ ■	Blue	■ ■	■ ■	■ ■	■ ■	
Forest Green		■ ■ ■ ■ ■	Green	■	■	■ ■	■ ■	
Flagstone Blue		■ ■ ■ ■ ■	Medium Blue	■	■	■ ■	■ ■	
HAND-SPLIT SHAKE	Cypress Green	■ ■ ■ ■ ■	Medium Green	■	■	■ ■	■ ■	
	Sunset Cedar / Traditional Cedar	■ ■ ■ ■ ■	Medium Brown	■	■	■ ■	■ ■	
	Harvest Cedar / Natural Cedar	■ ■ ■ ■ ■	Dark Brown	■	■	■ ■	■ ■	
	Antique White / Weathered White	■ ■ ■ ■ ■	Variiegated	■	■	■ ■	■ ■	
	Autumn Cedar	■ ■ ■ ■ ■	Medium Brown	■	■	■ ■	■ ■	
	Newport Cedar	■ ■ ■ ■ ■	Dark Gray	■	■	■ ■	■ ■	
	Seaside Gray	■ ■ ■ ■ ■	Seaside Gray	■	■	■ ■	■ ■	

Cedar Pride EZ™
Corner



Hand-Split Shake EZ™
M Series Corner



Hand-Split Shake EZ™
90° Corner



RoughSawn Cedar Collection EZ™
Corners

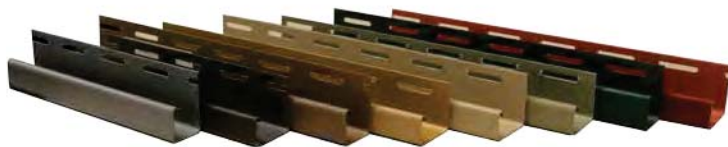


Cape Cod Perfection EZ™
Corner



Exteria offers a variety of color coordinating accessories designed to give your home a finished look. With matching cedar profile corners and matching J-Channel to help complete the look.

J-Channels



EXTERIA MASONRY PANEL COLOR & ACCESSORY MATRIX

PRODUCT KEY	PANEL COLOR	ACCESSORY COLOR	LEDGE TRIM COLOR
HAND-LAID BRICK ORIGINAL	Colonial White	Clay	Clay
	Buff Blend	Clay	Clay
	Used Buff	Clay	Clay
	Red Blend	Clay	Clay
	Used Red	Clay	Clay
	Char Brown	Clay	Clay
HAND-LAID BRICK ENHANCED	Cambridge	Beige	Beige
	Edgemont	Beige	Beige
	Dover	Seaside Gray	Seaside Gray
	Williamsburg	Seaside Gray	Seaside Gray
HAND-CUT STONE ORIGINAL	Glacier White	Clay	Clay
	Desert Buff	Clay	Clay
	Canyon Gray	Clay	Clay
	Mountain Red	Clay	Clay
HAND-CUT STONE ENHANCED	Coral Red	Seaside Gray	Clay
	Chestnut Brown	Beige	Clay
	Winter White	Seaside Gray	Clay
	Adobe Clay	Beige	Clay
CREEK LEDGESTONE PREMIUM	Golden Montana	Santa Fe	Gray
	Arizona Sandstone	Tan	Clay
	Rocky Mountain Clay	Rocky Mountain	Sand
	Bucks Coutny Gray	Dark Brown	Gray
	Appalachian Ash	Lewiston Crest	Gray
CREEK LEDGESTONE ENHANCED	Sakkara	Clay	Clay
	Ridge Peak	Clay	Clay
	Amber Falls	Clay	Clay
	Smokey Mountain	Clay	Clay
	Terra Cotta	Clay	Clay
STACKED STONE ORIGINAL	Prairie Cream	Prairie Cream	Clay
	Dry Creek	Dry Creek	Sand
	Rustic Rock	Rustic Rock	Clay
	Mojave	Mojave	Clay
	Sierra Brown	Sierra Brown	Sand
	Desert Sunset	Desert Sunset	Sand
	Mountain Ash	Mountain Ash	Gray
STACKED STONE PREMIUM	Sedona Bluff	Sedona Bluff	Sand
	Sante Fe	Sante Fe	Sand / Clay
	Chestnut Hills	Chestnut Hills	Sand
	Lewiston Crest	Lewiston Crest	Granite Gray
	Shadow Ridge	Shadow Ridge	Midnight

Creek Ledgestone Corners



Arizona Sandstone



Appalachian Ash

Stacked Stone Corners



Lewiston Crest



Chestnut Hills

Hand-Laid Brick Corner



Red Blend

Hand-Cut Stone Corner



Canyon Gray

90° Ledgetrim Corner



Sand



Clay

Premium Ledge Trim



Clay

Gray

Sand

Granite

Midnight



Clay



Gray



Sand



Gray

Exteria provides this information as a guide for selecting available panel colors and vinyl accessories.
 Due to differing materials, the vinyl accessories will not be an exact color match to our panels, but will complement them.